

Premier Engineering Corporation

Firm Overview

1

SBA 8(a) Certified

SBA Small Disadvantaged Business

CAGE Code:

1U1E7

DUNS No:

932854417

City of Phoenix MBE/SBE

Arizona Unified Certification Program DBE (Phoenix, Tucson, ADOT)

NAICS Codes:

237310, 541330,
541340, 541350,
541360, 541370
541611, 541618,
541690, 541990

Firm Address:

6437 West Chandler Blvd.,
Suite 1
Chandler, AZ 85226
Ph: (480) 829-6000
Fx: (480) 829-6016
www.pre-engr.com

Arizona Technical Registration:

11055-0

Associated General Contractors (Arizona Chapter) License:

ROC279295

Premier Engineering Corporation (Premier) was founded in 1995, and over the course of nearly two decades has grown to be one of the most well respected consulting engineering firms in the valley. Premier is a multi-disciplinary local M/DBE firm with in-house capabilities to perform transportation, transit, general civil, structural, water resources engineering, water/wastewater, land survey, geotechnical engineering and construction management projects for federal, state and local government agencies. In addition to these services, we have recently added geotechnical engineering and materials testing to our firm capabilities.

Although our staff has grown to include a number of excellent project managers, Premier's principals continue to play key roles as both project and quality control managers assuring that our clients receive optimal products. We have earned the confidence of our clients over the years due to our employees' passion, integrity, and responsiveness. Our goal is to solve your program and project challenges with our unmatched level of enthusiasm and commitment to high-quality service within the required budgetary and schedule requirements.

Services

Premier's professional staff develops cost-effective solutions that are functional, efficient and focused on exceeding client expectations. We have the capability and experience to provide the following services:

- Construction Management
- Federal Programs
- Geotechnical Engineering
- Land Development
- Structural
- Survey/GIS
- Transportation
- Water Resources Engineering
- Water/Wastewater Engineering

Construction Management

Premier provides quality construction management services to help our clients in managing the construction process. Our professional staff monitors construction activities to ensure compliance with contract documents, coordinate site activities, and review change orders on behalf of our clients. Additional Construction Management services include:

- Schedule and Budget Evaluations
- Value Engineering
- Constructability Reviews
- Cost Estimate Accuracy Checks
- Monitoring and Coordinating Daily Construction Activities

Federal Programs

Premier's Federal Programs professionals integrate the technical disciplines for our federal clients, tailored to the specified need of each agency. Services include program management, project management, technical staffing and the services provided in each of Premier's departments such as construction management, site civil design, structural and water resources engineering. Our ability to satisfy and exceed client expectations originates in a collaborative culture supported by the entire team. Premier is uniquely qualified to provide services to our Federal Clients with the following staff credentials:

- Design by LEED® Accredited Professionals
- Survey Support by Certified Federal Surveyor
- Project Management by PMI® credentialed PMP

Premier Engineering Corporation

Firm Overview

2



Geotechnical

Premier's Geotechnical staff provides geotechnical engineering, material testing, and inspection services for buildings, bridges, roadways, runways/taxiways, utilities, waterways and landfill projects. Our in-house staff offers expertise with specialized geotechnical and material testing services in addition to traditional geotechnical analysis and design projects. These specialized services include work related to landfills, non-destructive testing, and construction monitoring services. Premier's geotechnical services include (we are in the process of setting up our lab):

- Geotechnical Subsurface Investigation
- Geophysical Exploration
- Quality Control Testing and Inspection
- Pavement Design and Management
- Landfill Design, Liner Testing and Inspection
- Landfill Pre- and Post-Closure Compliance
- Stabilization of Construction Debris Dump Site
- Non-Destructive Integrity Testing of Drilled Shafts
- Construction Vibration and Settlement Monitoring
- Phase I and Phase II Environmental Site Assessment
- Geotechnical and Geo-Environmental Remediation
- Earth Retaining Structures

Land Development

Premier's Land Development professionals provide functional, efficient, and cost-effective site development solutions using sustainable design practices. Our LEED® accredited engineers transform land into viable projects, creating a responsible fit between physical site constraints, public expectations, fiscal requirements, and environmental considerations. Our staff has the experience and capabilities to develop commercial/industrial sites, residential/commercial subdivisions, educational facilities (K-12 schools, community colleges and universities), hospitals/medical centers, churches/worship centers, golf courses and public parks, apartment complexes, and pedestrian and bicycle facilities. Services include:

- Site Demolition
- Site Planning
- Grading and Drainage
- Paving and Horizontal Control
- Design Reports
- Quantity and Cost Estimates
- Special Provisions
- Bidding Assistance
- Post-Design Services
- Storm Water Pollution Prevention Plans (SWPPP)



Structural

Premier's Structural staff provides planning and engineering services for bridges, retaining and sound walls, pump stations, and drainage structures. Our professionals offer extensive experience in all phases of structural projects, including project management, studies, concept and structure selection reports, final design and inspections. Premier's bridge expertise encompasses the entire spectrum from bridge concepts to final design and construction administration and from bridge inspection to repair designs. We also provide design of other transportation related structures. Services include:

- Bridge and Wall Type Selection Studies
- Bridge Design (Traffic, Railroad, Bicycle and Pedestrian)
- Bridge Inspection Services
- Pump Station/Drainage Structure Design
- Retaining/Noise/Combination Wall Design
- Special Box Culverts and Junction Structures
- Miscellaneous Structures

Premier Engineering Corporation

Firm Overview

3

Survey/GIS

Premier's Survey staff provides a wide range of land surveying services to both private and public clients. Our fully-equipped survey crews, using Global Positioning System (GPS) technology and a total dedication to quality and service, meet all our clients' land surveying needs. Our survey professionals provide services in the following areas/disciplines:

- Construction Staking
- ALTA/ACSM Surveys
- Boundary Surveys
- Right-of-Way Mapping
- Topographic Surveys
- Aerial Mapping Control
- Base Map Preparation
- Cadastral Surveys
- Utility Records Research and Mapping
- Final Platting
- Preparation of Legal Descriptions
- Exhibits for Right-of-Way/Easement Dedication
- Geographic Information Systems (GIS)
- Building Information Modeling/Management (BIM)



Transportation

Premier's Transportation professionals provide planning and engineering services for roadway and major streets, freeways and transit projects. Our accomplished staff offers extensive experience in all phases of transportation projects, including project management, studies, planning, preliminary design concepts and final design. We strive to provide innovative and cost-effective solutions for the transportation needs of our clients. Premier's in-house capabilities include the resources to complete the following tasks:

- Corridor/Route Studies
- Design Concept Reports
- Freeway/Highway Design
- Arterial/Street Design
- Right-of-Way Analysis and Planning
- Utility Design and Relocation
- Transit Related Facilities Design

Water Resources

Premier's dedicated staff of engineers and hydrologists is well qualified to evaluate and project all levels of water resources needs/demands and provide innovative buildable project solutions. Our professionals will guide your project through the protection and management of water resources as they flow and move through the various natural and man-made conduits and collection systems to the treatment plants and distribution systems necessary for your project. Premier's water resources capabilities include:

- Master Drainage Studies
- Floodplain Delineation and Studies
- Hydrologic/Hydraulic/Sediment Transport Analyses and Modeling
- Pavement Drainage Design
- Storm Drain Studies and Design
- Retention/Detention Basin Facility Design
- Water Distribution System Analysis and Design
- Bridge/Culvert Hydraulics and River Mechanics
- 401/404 Permits
- Due Diligence Studies
- Flood Insurance Rate Maps and Studies
- Regional Flood Control Planning/Design
- FEMA Letters of Map Revision (LOMR)
- Water Resources Planning and Asset Management
- Watershed Management/Wetlands
- Stream Stabilization/Restoration
- Scour Evaluation and Erosion Control
- Dams and Levees



Premier Engineering Corporation

Firm Overview

4



Water/Wastewater Engineering

Premier's Water/Wastewater staff can provide planning, design and construction services for a variety of utility projects. These include both potable and reclaimed water distribution and transmission mains, sewage collection systems (both gravity and pressure systems), as well as, booster and lift stations. Our staff is well qualified to guide through the permitting process and assisting both large and small system operations through the various phases of a project. We provide these services to both large and small utility providers using various sources of funding and project deliver methods.

- Water Transmission Mains
- Sanitary Sewer Design
- Booster Stations
- Pumping Stations
- Utility System Design/Evaluation
- Design Flow Forecasting

Quality Assurance/Quality Control (QA/QC)

Premier's quality management plan establishes a continuous process to ensure quality on a firm-wide basis and at a project-specific level. Premier has developed and adopted a global QA/QC plan that outlines separate procedures for the various tasks typically associated with engineering studies, design work and preparation of construction documents. Prior to client submittal, the QC package containing all pertinent documents is reviewed by the Project Manager and the QA/QC Officer identified for that project. This audit confirms that Premier's QA/QC plan has been followed in preparation of the reports and the Plans, Specifications and Estimate documents minimizing work product errors and omissions.

Technology

Premier's technological infrastructure consists of high-performance workstations connected through a Microsoft Windows Server network. We communicate and share electronic information with our clients rapidly and securely through our broadband internet connection. Our computers are custom-built to meet the high demands of today's leading graphics and analysis software. Premier maintains ongoing software subscriptions to Autodesk, Bentley and other leading names, utilizing the latest releases of titles such as AutoCAD, Civil 3D, Microstation and InRoads for the purposes of design and drafting. We use the Adobe Creative Suite for high-end press-quality publications. Along with the Microsoft Office suite for documents and emails, our Newforma Project Center software keeps us organized, providing easy methods to file project emails, track action items, and collaborate with our clients through its FTP-like file-sharing system. Premier also has the in-house ability to produce full-size prints, copies and scans, in both color and black-white.

Safety

Premier strives to have zero safety incidents on each and every project. Our solid safety performance results in reduced costs and increased productivity. We recognize that accidents are costly and can have a significant negative impact by affecting employees, subcontractors, and public image as well as a project's overall cost and schedule. Premier's health and safety program includes job-specific safety training and site-specific Safety Plans to identify and reduce potential hazards. Our program focuses on safety behavior and empowerment of employees to recognize, report, and correct unsafe acts and/or conditions. As a result of our efforts, we have never had a reportable incident on a project.

Client Testimonials

■ 67th Avenue Bridge over Salt River

"I really appreciate you (Premier) expediting the work as much as you have. This project has a very aggressive schedule, so everything is very interrelated. Almost every task is on the critical path. Getting your data will allow us to keep moving forward on the related tasks. I appreciate your help accommodating some late changes to satisfy the client!" ~ John D. Hall, PE - Kimley-Horn and Associates, Inc.

■ Multi-Use Path Design Projects

"Thank you for your excellent level of service. We really appreciate your cooperation and attention to detail. Hopefully we can work together on addition projects in the near future." ~ Scott Belonger, PE - Loris and Associates, Inc.

■ SR 303L: Waddell Road to Mountain View Boulevard

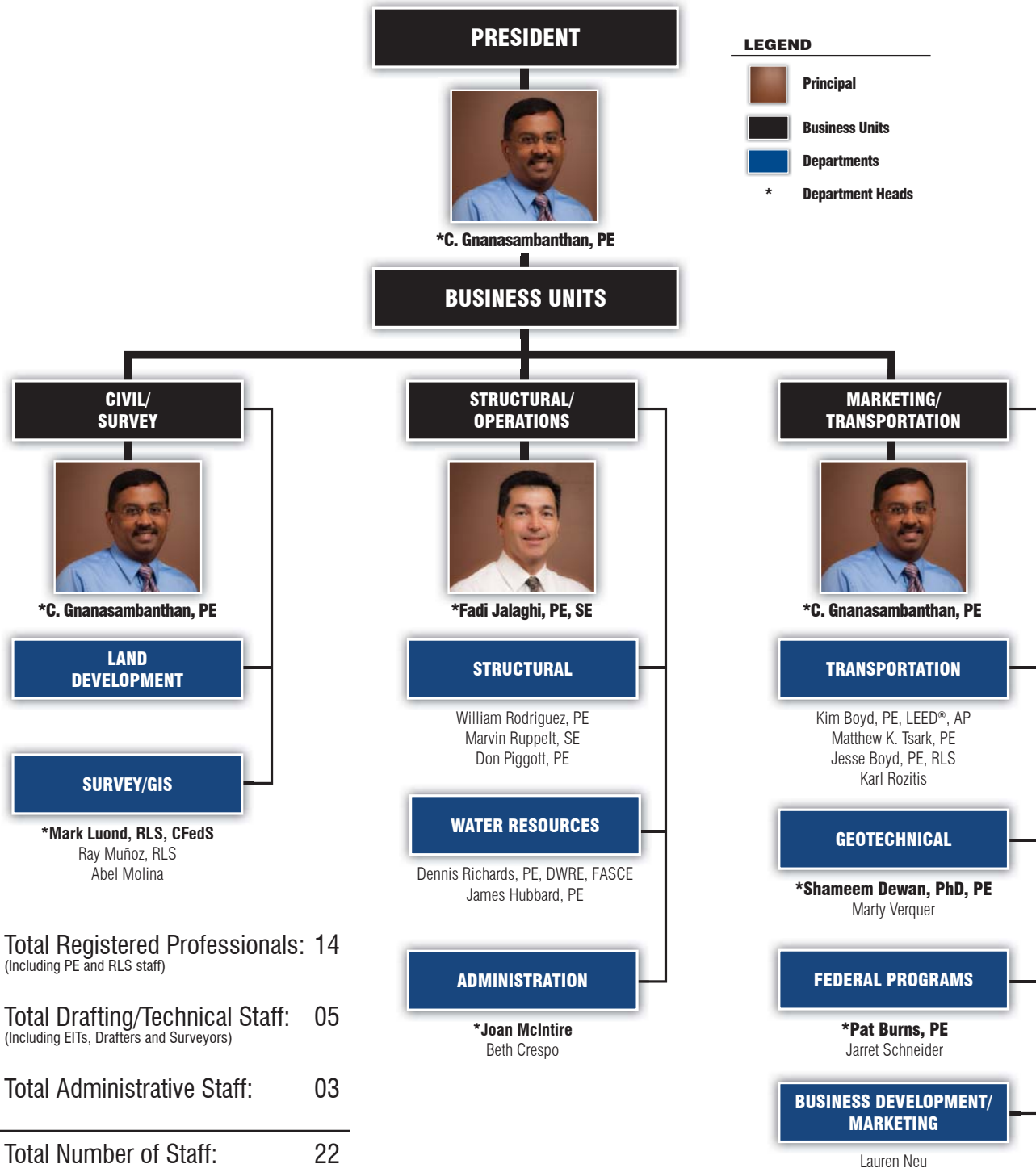
"As we have grown to expect, Premier's service was exemplary throughout the design of the project." ~ Steve Beasley, PE - ADOT Urban Project Management Group

■ Camelback Pedestrian Underpass

"The Premier-led design team's innovative approaches and creative solutions have resulted in an exceptional project. The design team was faced with the challenge of obtaining a consensus from adjacent property owners, community and City of Phoenix staff, for a concept which would meet the project goals. The design team partnered closely with the community to develop a pedestrian underpass concept that was widely accepted. Their effort resulted in a successful completion of the project and raises the bar for public works design and construction projects." ~ MariAnn Holder, PE (retired) - City of Phoenix

Premier Engineering Corporation

Firm Organizational Structure



Total Registered Professionals: 14
(Including PE and RLS staff)

Total Drafting/Technical Staff: 05
(Including EITs, Drafters and Surveyors)

Total Administrative Staff: 03

Total Number of Staff: 22